

WAAS CH 86622 W13A	APP CRS 136°	Rwy Idg THRE 608 Apt Elev 660	4400
--	------------------------	---	-------------

RNAV (GPS) RWY 13

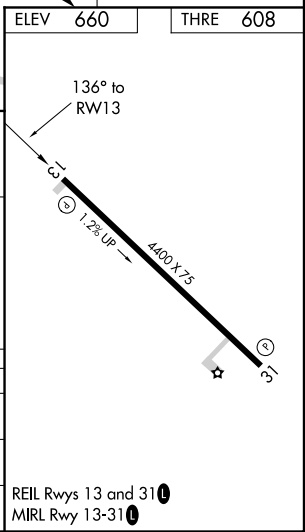
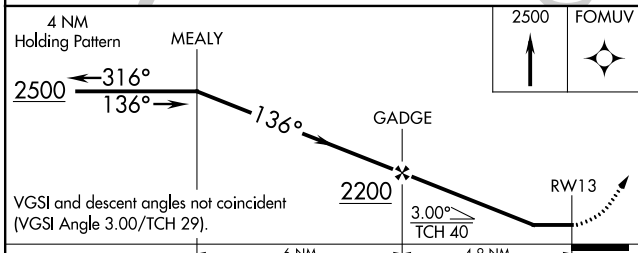
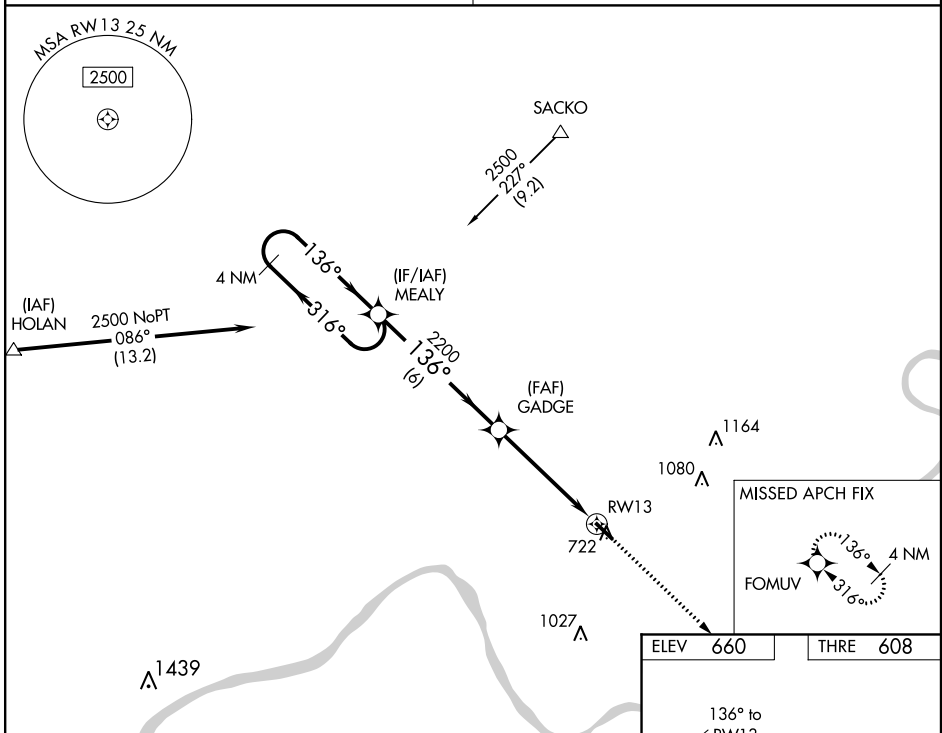
TELL CITY/PERRY COUNTY MUNI (TEL)

NA When VGSI inop, Circling Rwy 31 NA at night. When VGSI inop, Straight-in/Circling Rwy 13 procedure NA at night. DME/DME RNP-0.3 NA. Visibility reduction by helicopters NA.
 Obtain local altimeter setting on CTAF; when not received, use Huntingburg altimeter setting and increase all MDA 80 feet and increase LP Cat C visibility 1/4 mile and LNAV Cat C visibility 1/8 mile.

MISSED APPROACH:
 Climb to 2500 direct FOMUV and hold.

EVANSVILLE APP CON *
126.4 226.4

UNICOM
122.7 (CTAF) 0



CATEGORY	A	B	C	D
LP MDA	1000-1	392 (400-1)	1000-1 1/8 392 (400-1 1/8)	NA
LNAV MDA	1040-1	432 (400-1)	1040-1 1/4 432 (400-1 1/4)	NA
CIRCLING	1080-1 420 (500-1)	1120-1 460 (500-1)	1120-1 1/2 460 (500-1 1/2)	NA

REIL Rwy 13 and 31 0
 MIRL Rwy 13-31 0

EC-2, 14 NOV 2013 to 12 DEC 2013

EC-2, 14 NOV 2013 to 12 DEC 2013

WAAS CH 93623 W31A	APP CRS 316°	Rwy Idg THRE 660 Apt Elev 660	4400
--	------------------------	---	-------------

RNAV (GPS) RWY 31

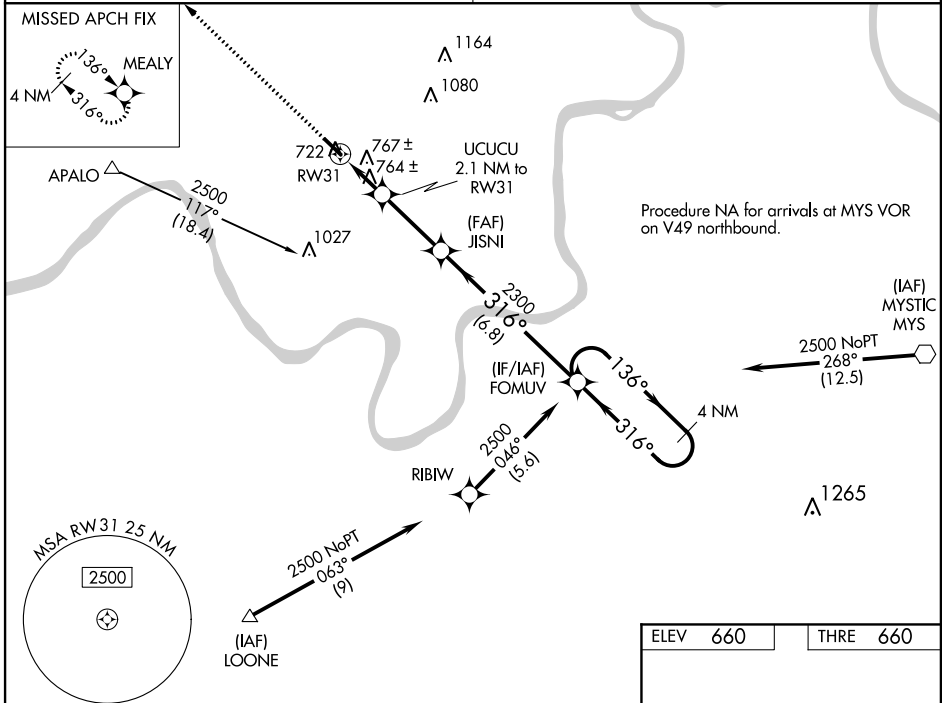
TELL CITY/PERRY COUNTY MUNI (TEL)

NA When VGSI inop, Circling Rwy 13 NA at night. When VGSI inop, Straight-in/Circling Rwy 31 procedure NA at night. DME/DME RNP-0.3 NA. Visibility reduction by helicopters NA. Obtain local altimeter setting on CTAF; when not received, use Huntingburg altimeter setting and increase all MDA 80 feet and increase LP and LNAV Cat C visibility 1/4 mile.

MISSED APPROACH:
Climb to 2500 direct MEALY and hold.

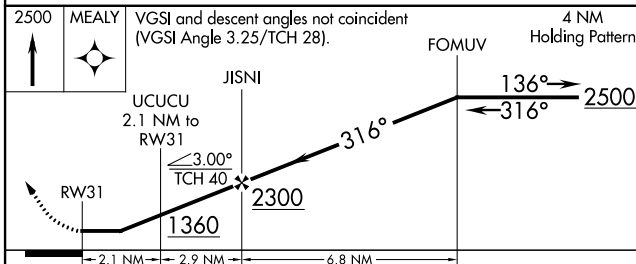
EVANSVILLE APP CON *
126.4 226.4

UNICOM
122.7 (CTAF) 0



EC-2, 14 NOV 2013 to 12 DEC 2013

EC-2, 14 NOV 2013 to 12 DEC 2013



ELEV 660	THRE 660
REIL Rwy 13 and 31 0 MIREL Rwy 13-31 0	

CATEGORY	A	B	C	D
LP MDA		1020-1 360 (400-1)		NA
LNAV MDA		1020-1 360 (400-1)		NA
CIRCLING	1080-1 420 (500-1)	1120-1 460 (500-1)	1120-1 1/2 460 (500-1 1/2)	NA